



Airport Tenant User Meeting

Presentation of 2011 Runway 9/27 Construction Plan



March 9, 2011



Welcome!

- **Airport is in the middle of major program to reconstruct Runway 9/27 and midfield intersection**
- **Airport has endeavored to keep users informed of project via newsletters and construction alerts**
- **2011 is critical construction season**
- **Thought it would be good have information meeting with users to provide more detail about the upcoming construction activities – Already had meeting with air carriers**
- **Thank you for participating this evening!**



Presenters

- **Brad Hamilton: Project Coordinator - Crawford, Murphy & Tilly, Inc.**
- **Mike Haney: Director of Special Projects – KMLI**
- **Bryan Johnson: Director of Operations - KMLI**



Meeting Agenda

- **Project Overview**
- **2011 Construction Season Overview**
- **2011 Construction Phasing**
- **Discussion**

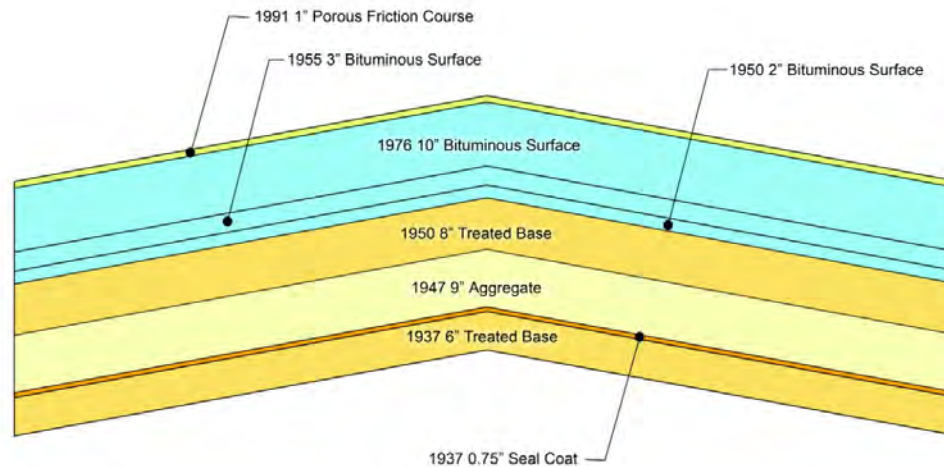


Runway 9/27 Project Overview



Project Purpose

- Runway 9/27 as last reconstructed in 1976
- In mid-2000's, Runway 9/27 began to show significant indications of distress
- Subsurface pavement investigation indicated that pavement is virtually failed under the surface
- Complete removal and replacement of 6,500 feet of Runway 9/27 and entire midfield intersection is necessary



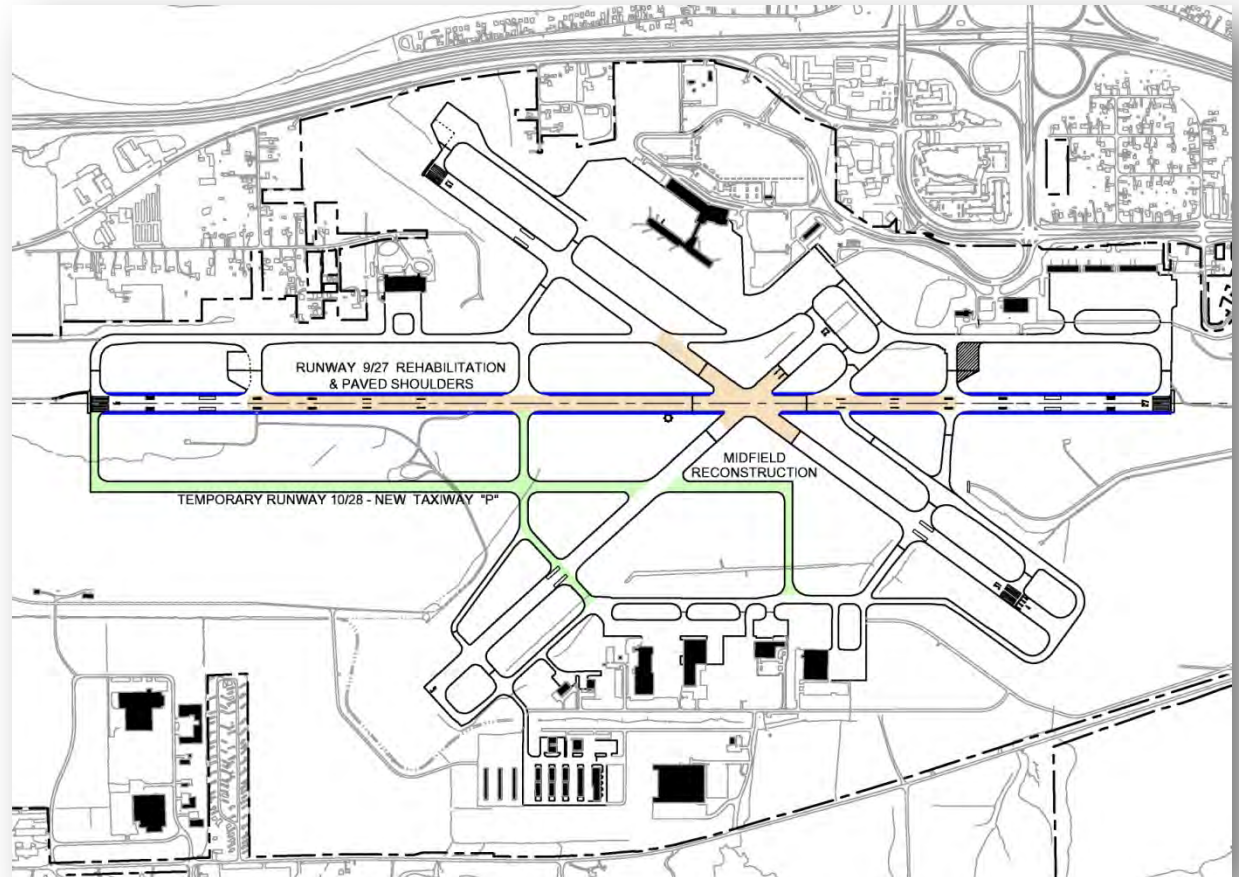


Rehabilitation Options

- Airport performed an analysis of rehabilitation options with goal of minimizing disruptions to users
- Recognition that every option was going to reduce the level of service in terms of facilities and approaches
- Alternatives included:
 - **Extend Runway 9/27 and Use as Temporary Runway**
 - **Construct Parallel Runway**
 - **Fast Track Paving Methods**
 - **Use of Parallel Taxiway as Temporary Runway (Existing Taxiway 'H' and Proposed Taxiway 'P')**
- Preferred option was to construct a parallel taxiway to Runway 9/27 that could also be used as a temporary runway

Project Overview

- Construction of New Taxiway 'P' and Use as Temporary Runway (6,500' x 100' with Localizer and GPS Approaches)
- Rehabilitation of Runway 9/27 & Midfield
- Construction of Runway 9/27 Paved Shoulders

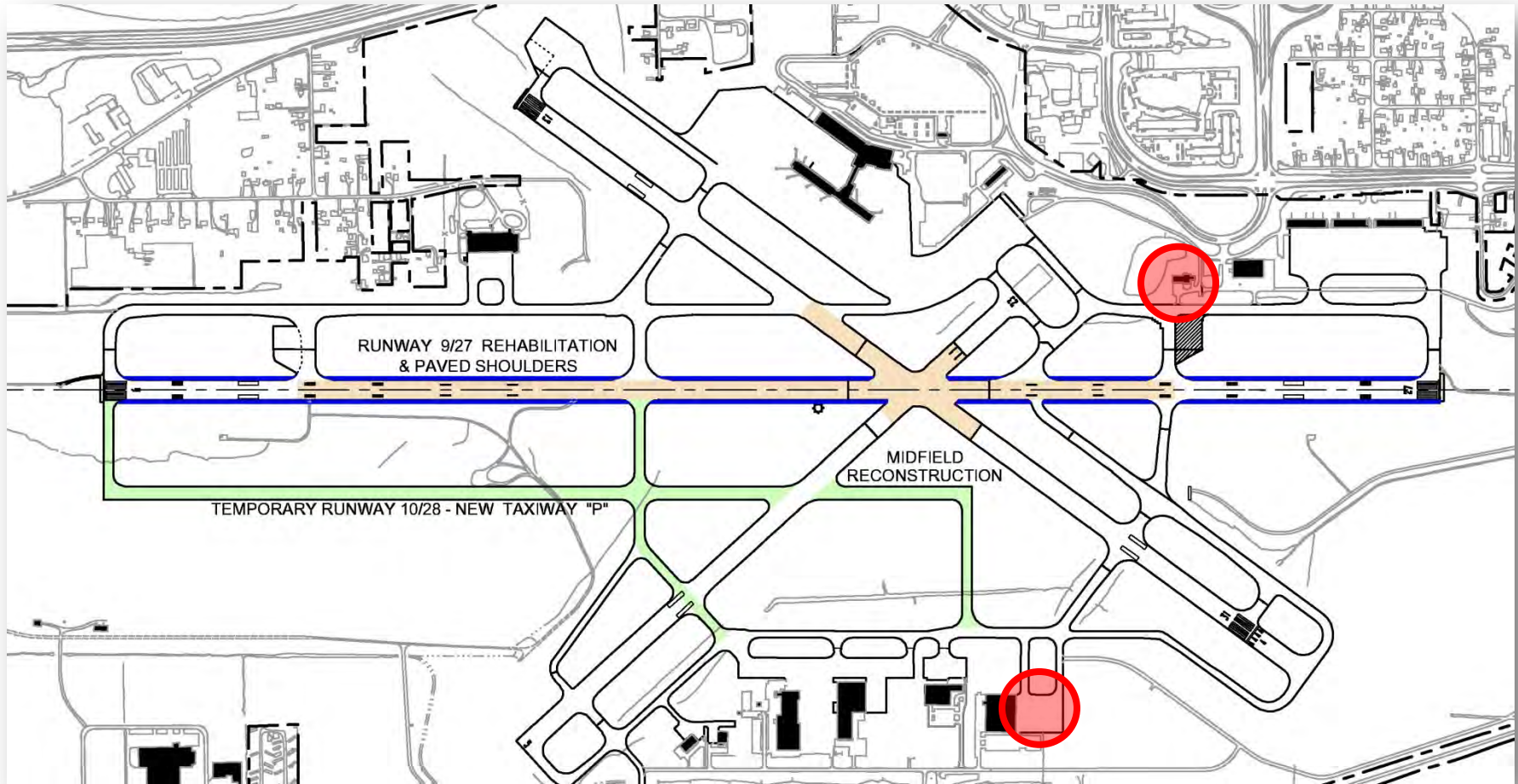




Temporary Runway 10/28 Facilities

- 6,500'x100' concrete runway – grooved
- Medium Intensity Runway Edge Lighting
- Runways 10 and 28 – PAPIs and REILs
 - **PAPIs idle and daytime at 30% - Stepped up with runway edge lights**
 - **REILs on when edge lighting at 100%**
 - **ATCT Controlled (0530 – 2230) - Pilot Controlled from (2230 – 0530)**
- Temporary ARFF located south of Runway 28 threshold

ARFF Locations





Temporary Runway 10/28 Facilities

- **Two Instrument Approaches**

APPROACH TYPE	DH/MDA	VISIBILITY	
		A & B	C & D
RWY 10 LOC	462'	1	1-3/8
RWY 28 RNAV (GPS)	440'	1	1-1/4

- **IFR conditions occur mostly in a.m. (11 a.m. or earlier)**



Project Implementation

- **2009 – Grading and Drainage for Temporary Runway 10/28 (completed)**
- **2010 – Paving of Runway 10/28 and Taxiway ‘D’ (completed)**
- **2011 – Reconstruction of Runway 9/27 and Shoulders (Runways 9/27, 13/31, and 5/23 closed for 2011 summer construction season only)**
- **2012 – Decommissioning of Runway 10/28 and Conversion to Taxiway ‘P’**



Overview of 2011 Construction

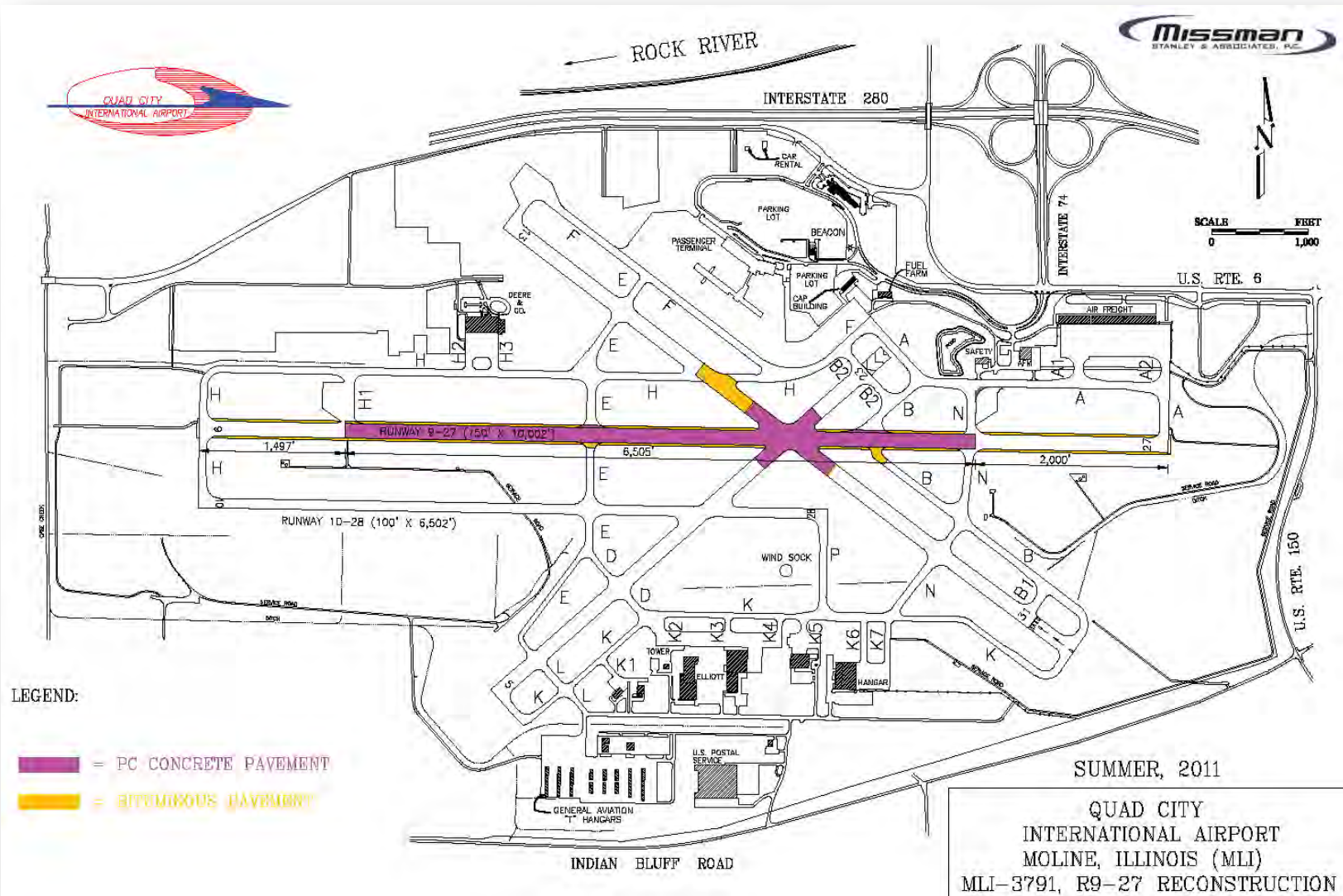




Overview of 2011 Construction Project

- **Construction will involve:**
 - **Runway 9/27 Rehabilitation (6,500' x 150')**
 - **Triple Runway Intersection Rehabilitation**
 - **Runway 9/27 Shoulder Construction (25' x 10,000')**
 - **Runway Edge Lighting Rehabilitation**
- **Pavement reconstruction will be removal and replacement with 14" grooved concrete**
- **Shoulder pavement will be asphalt**
- **Midfield reconstruction limits will be to edge of the safety area for each runway**
- **LED edge lighting proposed for installation in 2012**

Overview of 2011 Construction Project





Overview of 2011 Construction Project

- **4+ month construction schedule with an anticipated start date of May 1, 2011.**
- **All existing runways will be closed for duration of runway rehabilitation.**
- **Existing runways will be marked with yellow plastic Xs and/or lighted Xs**
- **All existing nav aids will be turned off and NOTAMed out of service**



2011 Construction Phasing





2011 Construction Staging

- **4 Construction Stages**

- **Stage 1: Signage and Marking for Use of Runway 10/28 (6 weeks)**
- **Runway 10/28 Cutover** (Existing Runways Closed)
- **Stage 2: Runway 9/27 West and Midfield Reconstruction and Paved Shoulders (20 weeks)**
- **Stage 3: Runway 9/27 East Reconstruction (7 weeks)**
- **Runway 9/27, 13/31 Cutover** (Runway 10/28 Closed)
- **Stage 4: Regrade Runway 13/31 Safety Area (1 week)**



Runway 9/27 Construction – Stage 1 *(Runway 9/27 Open)*

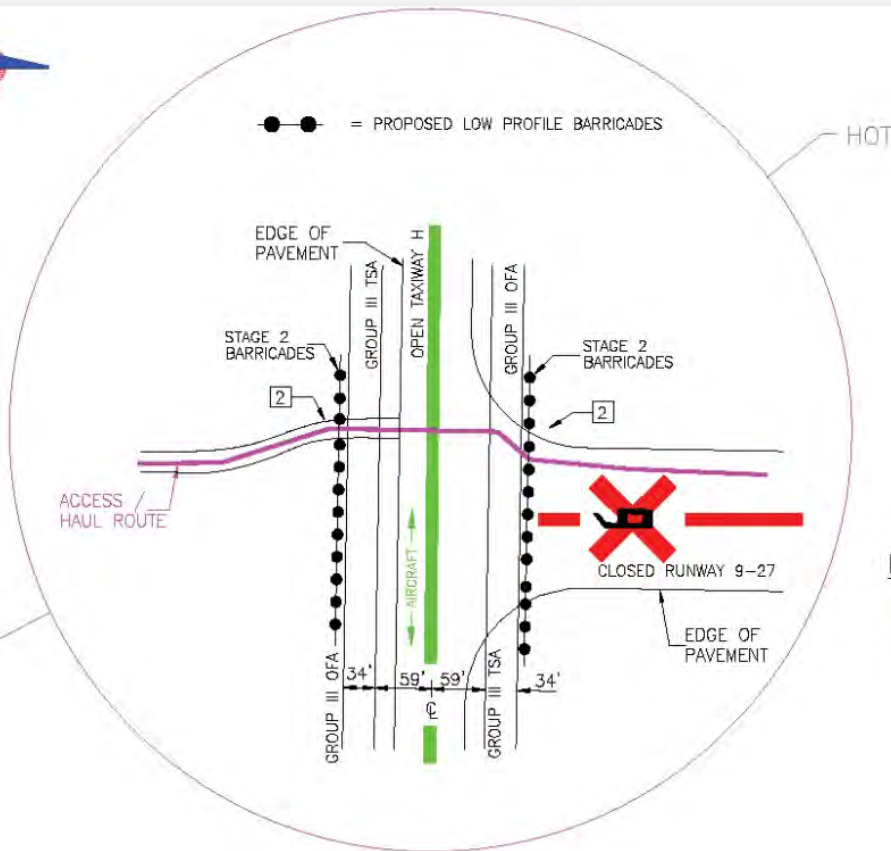
- **Tentative Schedule: March 17 – April 30**
- **Phased signage and marking of airfield for cutover to Runway 10/28**
- **Pavements will be closed once they are remarked/signed**



Runway 9/27 Construction – Stage 2 *(Existing Runways Closed)*

- **Tentative Schedule: May 1 – September 20**
- **Reconstruction of Western Portion of Runway 9/27 including Midfield Intersection**
- **Construction of Runway 9/27 Paved Shoulders**

Runway 9/27 Stage 2 Construction Hot Spot



**CAUTION:
CONSTRUCTION
VEHICLE
CROSSING!!**

ESTIMATED OPERATIONS:

AIRCRAFT : 9,590
CONSTRUCTION : 46,800

NUMBERED LEGEND:

- [2] CONTRACTOR SUPPLIED TRAFFIC CONTROL GUARD AND TRACTOR BRUSH DURING ALL HAULING OPERATIONS. ALL CONSTRUCTION TRAFFIC TO STOP AT INTERSECTION AND YIELD TO ALL AIRFIELD TRAFFIC AT ALL TIMES. KEEP PAVEMENT CLEAR OF FOD (FOREIGN OBJECT DEBRIS) AT ALL TIMES.

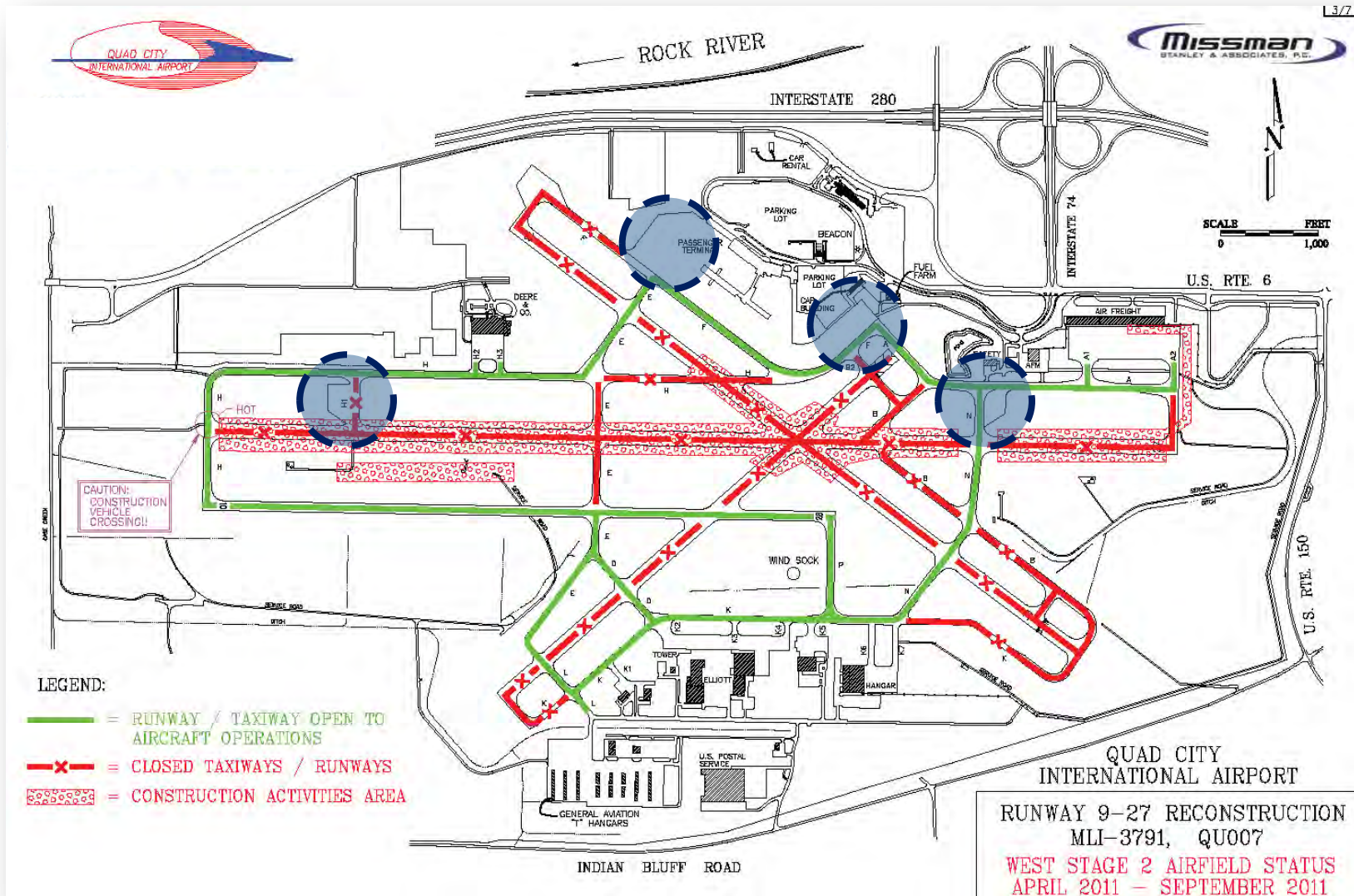
ACCESS / HAUL ROUTE
AND TAXIWAY H INTERSECTION

QUAD CITY
INTERNATIONAL AIRPORT

RUNWAY 9-27 RECONSTRUCTION
MLI-3791, QU007
WEST STAGE 2 CONSTRUCTION CROSSING
APRIL 2011 - SEPTEMBER 2011

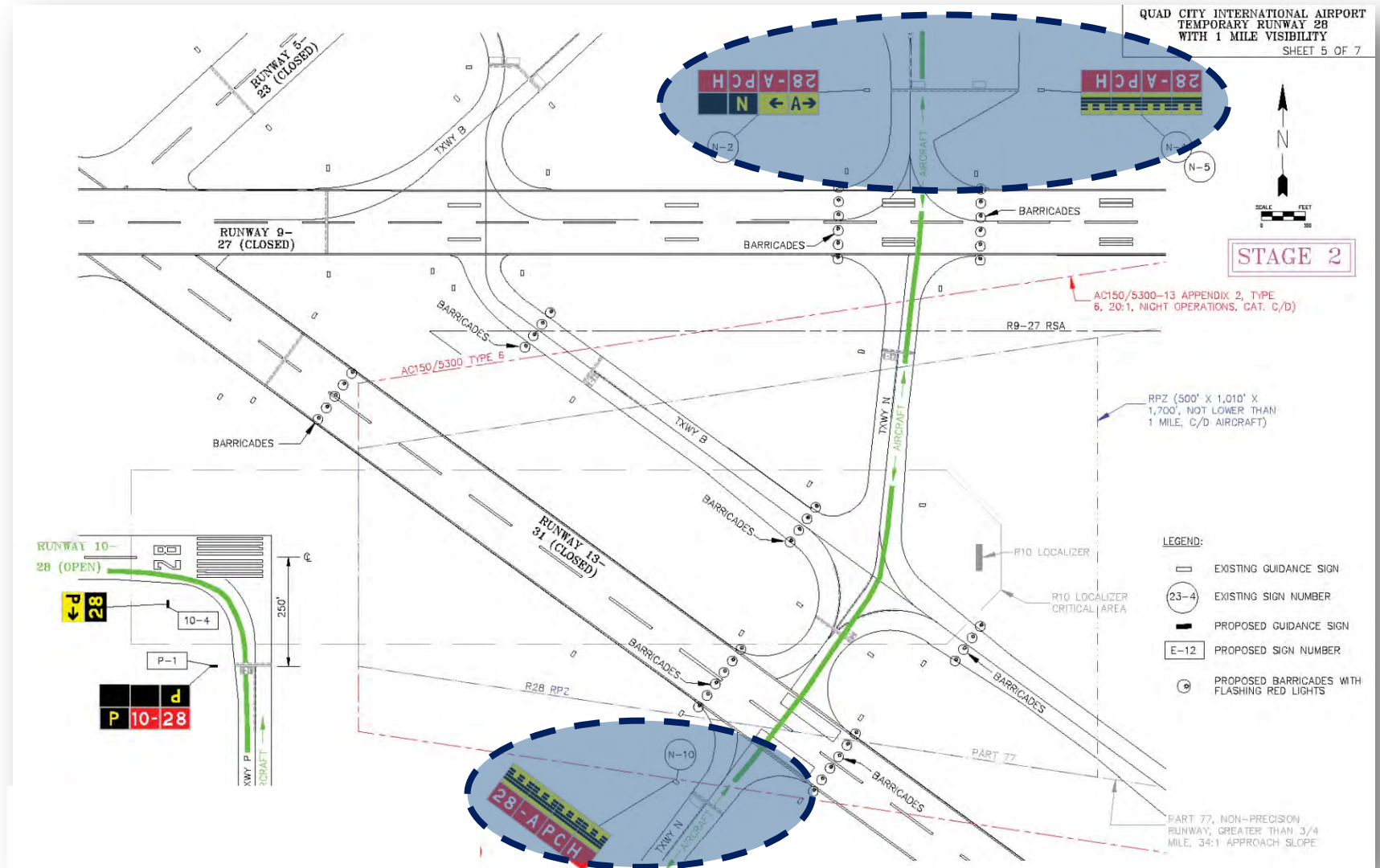


Air Carrier Clearance Hold Locations - Stage 2



L3/7

Runway 28 Approach Holds (Taxiway 'N')

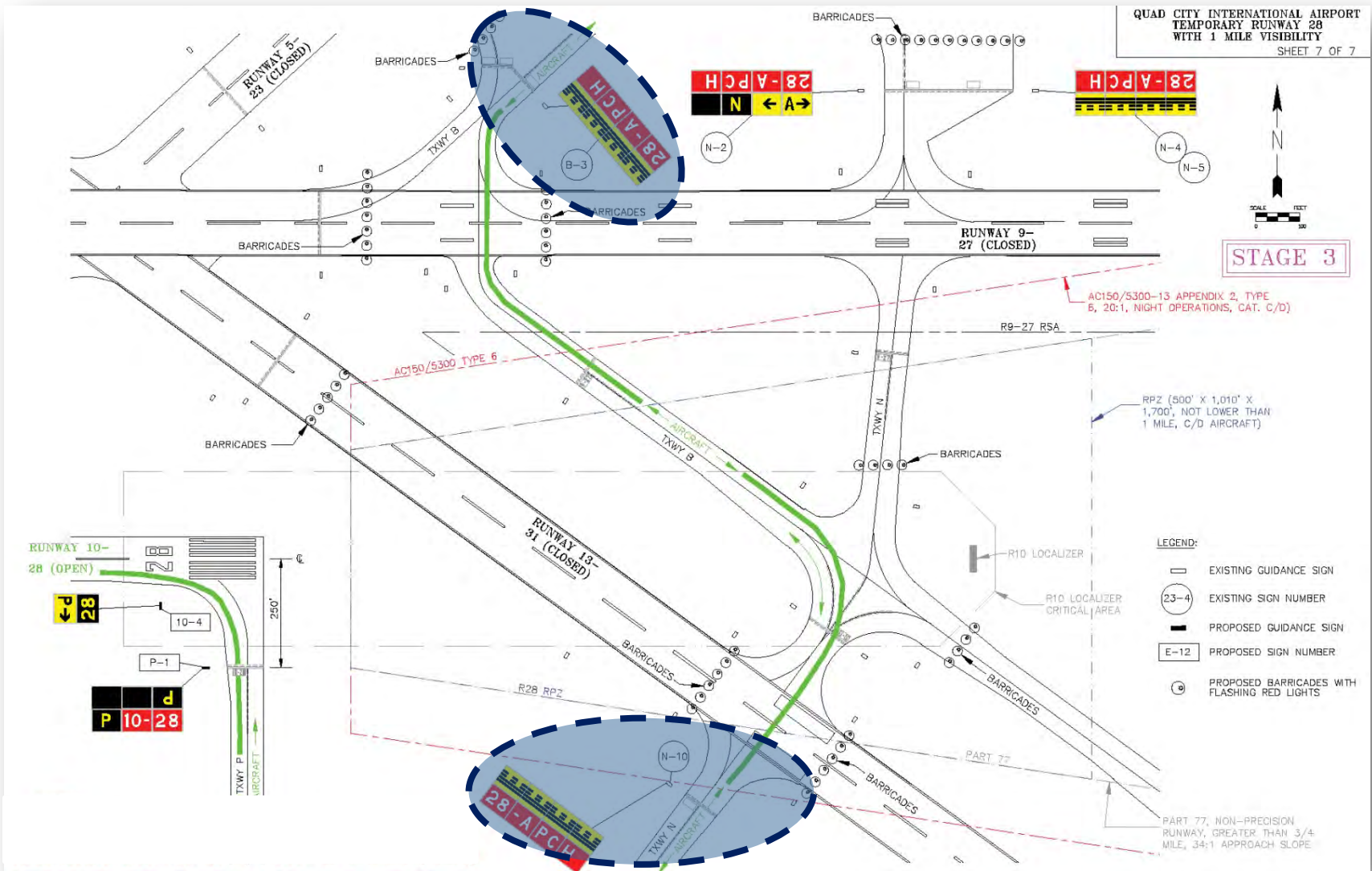




Runway 9/27 Construction – Stage 3 *(Existing Runways Closed)*

- **Tentative Schedule: September 20 – November 2**
- **Reconstruction of Eastern Portion of Runway 9/27**
- **Construction of Runway 9/27 Paved Shoulders**

Runway 28 Approach Holds (Taxiway 'B')





Summary

- **Reconstruction program is necessary due to failing pavements on Runway 9/27 and Midfield Intersection**
- **Program was designed to keep airfield open during construction activities**
- **A decreased level of service will be realized by users during construction**
- **Airport will use web-based Construction Alerts and NOTAMs to notify users of major changes in the airfield**
- **Contact Bryan Johnson – QCIA Director of Operations if you have further questions**



Discussion

